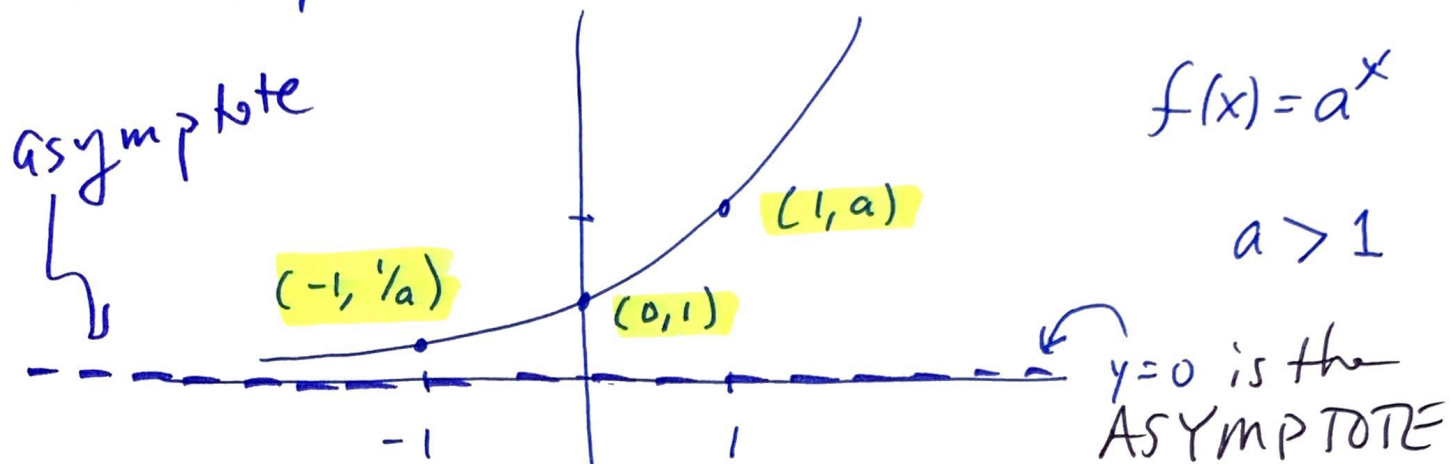


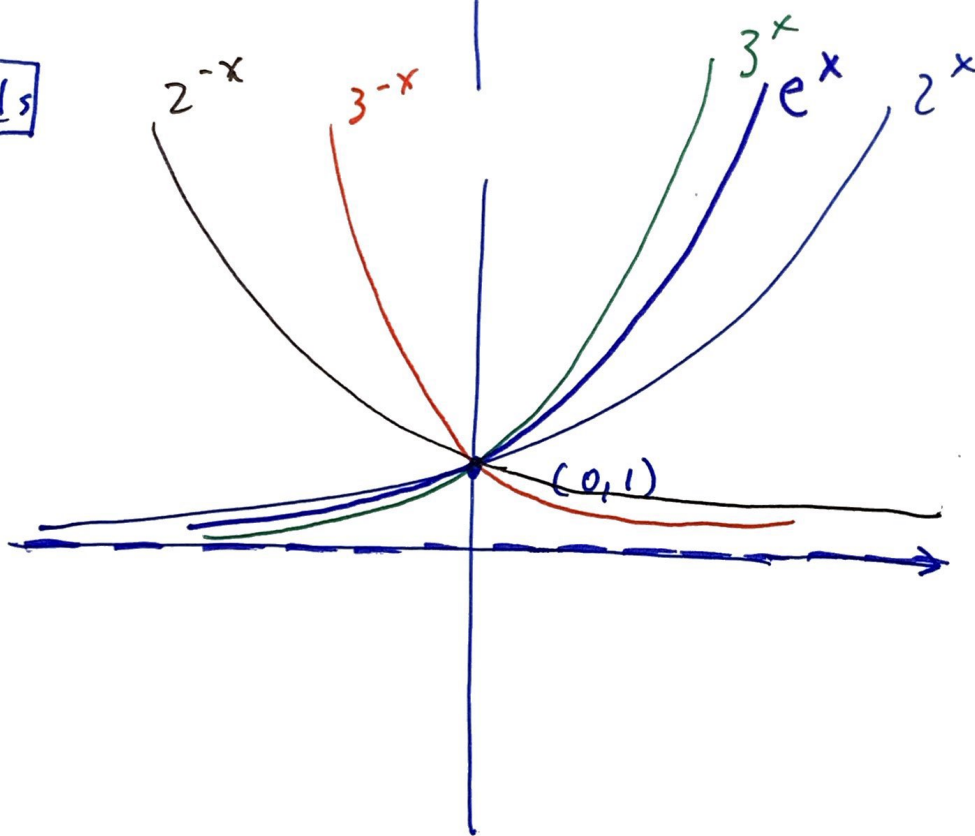
4.2 Graphing exponential functions

1

Compare graphs with different bases.



Trends



(*)

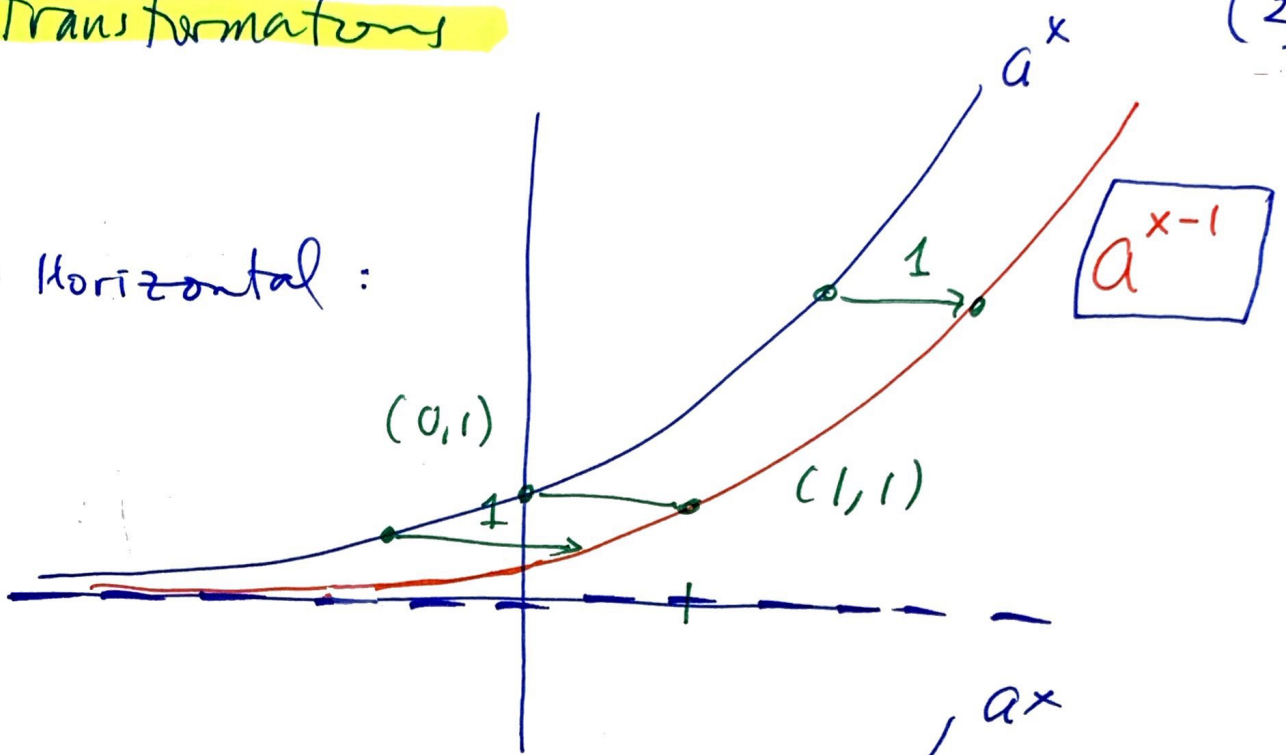
base "e", the natural number

$$2 < e = 2.718281828 < 3$$

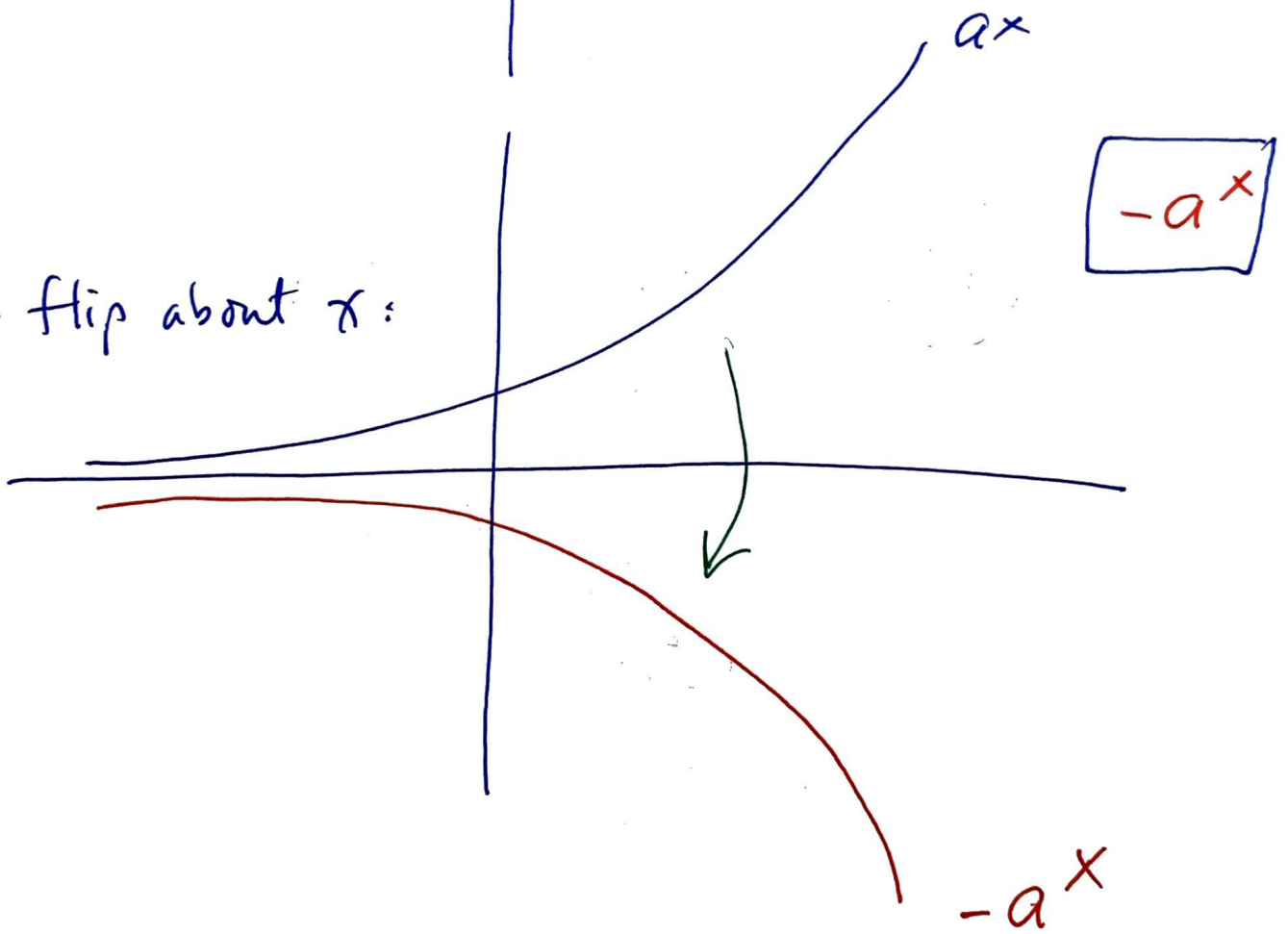
⊗ Transformations

(2)

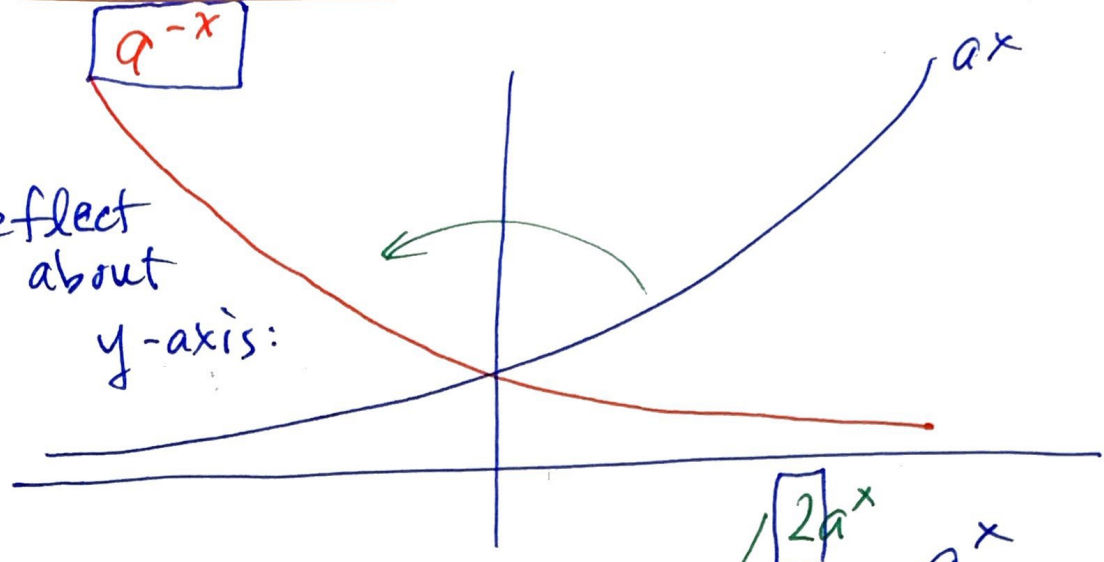
• Horizontal :



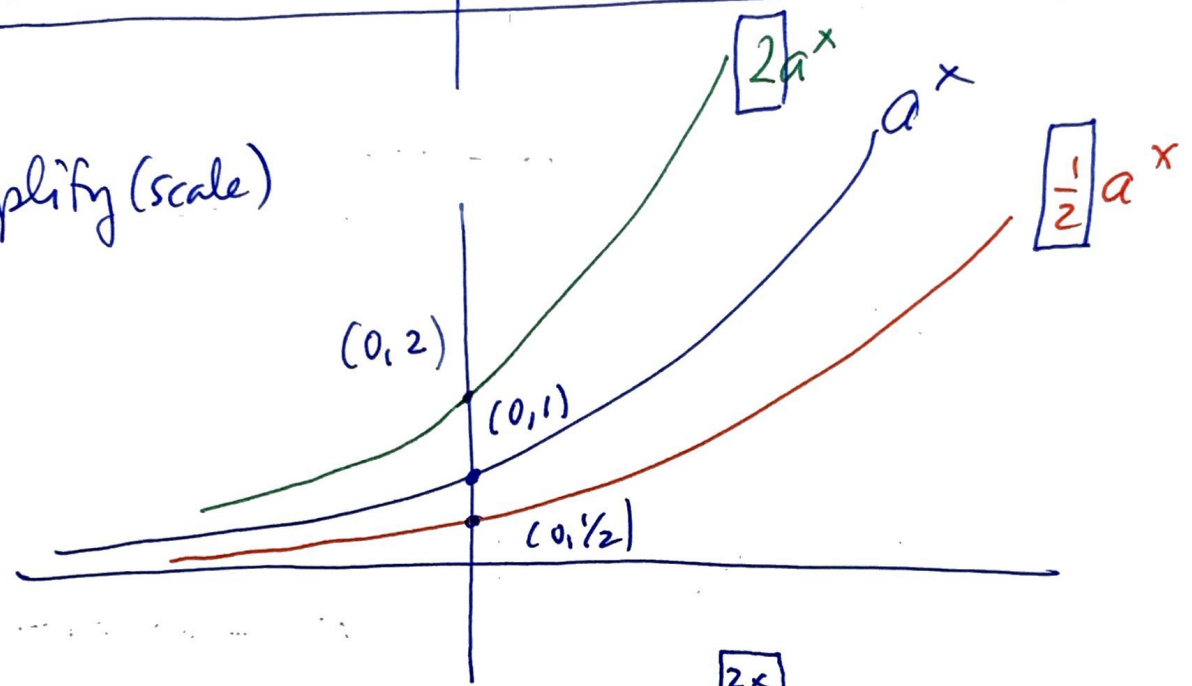
• flip about x :



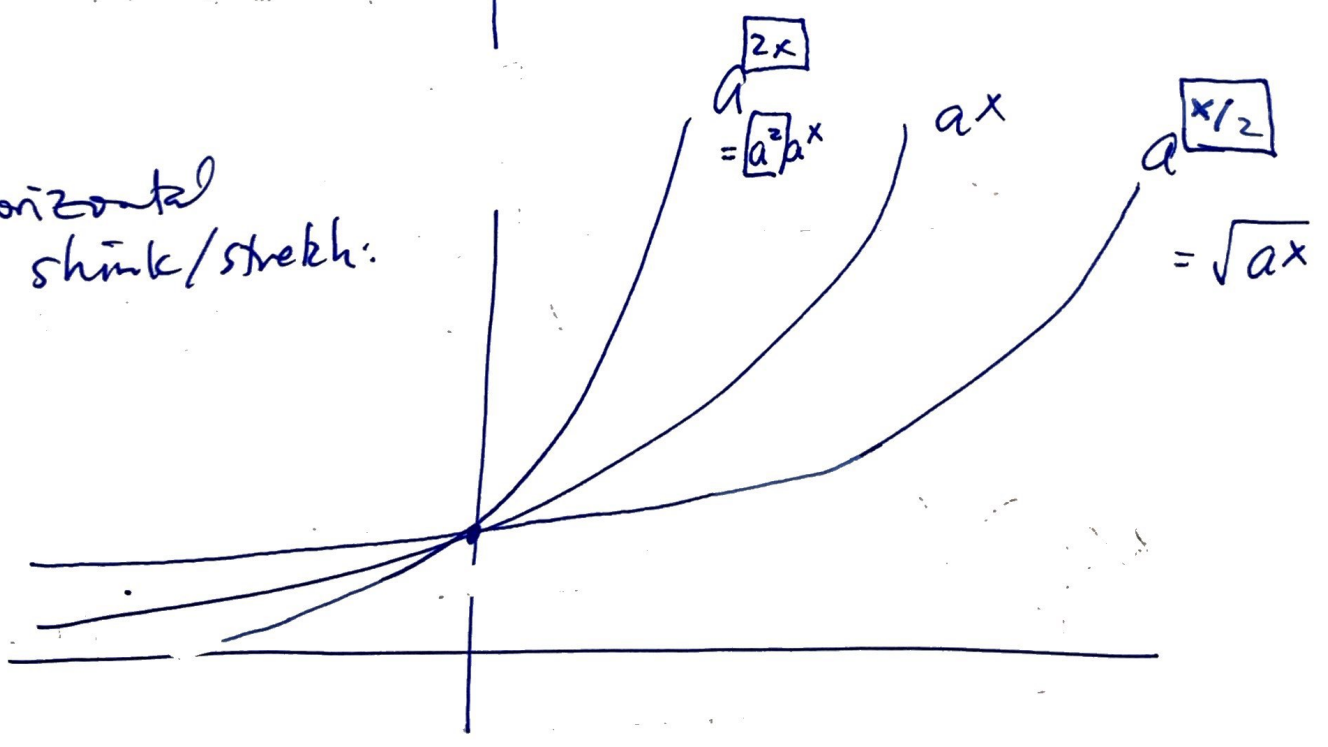
• reflect about y-axis:



• amplify (scale)



• horizontal shrink/stretch:

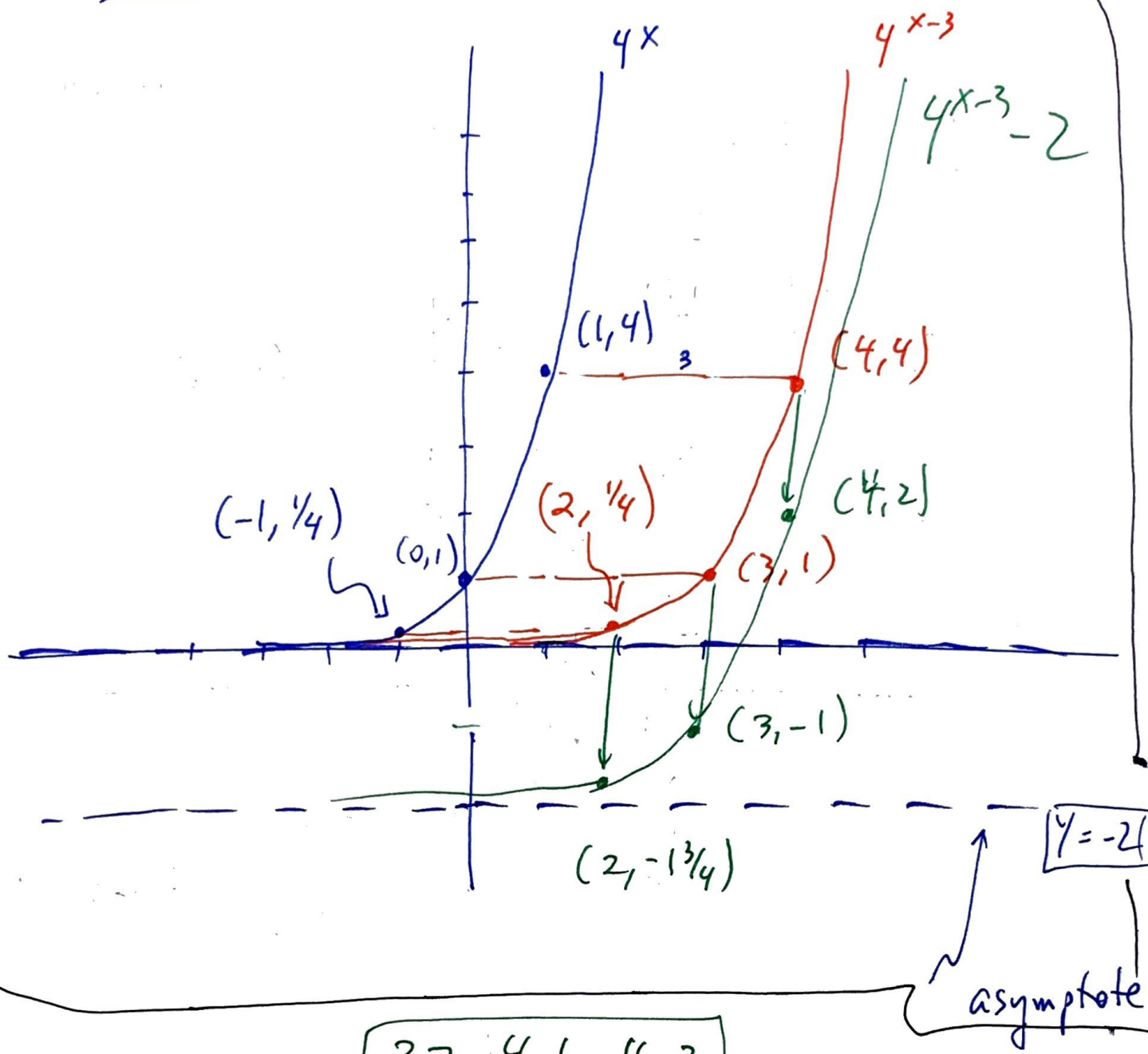


EX

Sketch

$$h(x) = 4^{x-3} - 2$$

4



3.7 4.1, 4.2

$y = -2$

asymptote